



# REFURBISH AND PROTECT IN A SIMPLE WAY

**MINERAL SYSTEM  
FOR GARAGE FLOORS**

Mineral system for refurbishing garage floors

# GARAGES WITH INCREASED DRIVE-IN QUALITY

## REFURBISHING AND PROTECTING MEANS PRESERVING VALUES



Garages provide protection for your assets, such as your vehicles. But how to protect garages? Whether due to mechanical stress caused by driving into the garage, heat and frost, wetness, de-icing salt or oil deposits: Over the course of time, unsealed screed finishes and/or concrete floors will inevitably suffer damage from being exposed to these effects. Utilizing the mineral PCI system for refurbishing garage floors will enable you to repair silting effects, spalling, break-outs and holes quickly and easily and thereby protect the existing concrete floor or screed sustainably and reliably. The PCI Zemtec Outdoor floor coating is easy to apply, it can be utilized immediately and provides optimum basic protection.



- 1 Floor/wall filling compound
- 2 Wash primer
- 3 Coating
- 4 Impregnation



## 1 Floor/wall filling compound

### PCI Nanocret R4 PCC for high-strength concrete repair

- For floor, wall and ceiling
- CE according to DIN EN 1504-3 Class R4 > 45 N/mm<sup>2</sup>
- Layer thickness 5-50 mm
- Meets the requirements of RiLi SIB (guideline for protection and repair of concrete elements)
- Can be walked on and worked over after **1 day**, able to bear weight after **3 days**

## 2 Wash primer

### PCI Gisogrund 404 special wash primer on absorbent and non-absorbent substrates

- For indoors and outdoors
- For use on concrete, screed, anhydrite, mastic asphalt and magnesia screed
- On non-absorbent substrates, e.g. old tiles
- Very low emission according to GEV-EMICODE EC1 PLUS
- Can be walked on after **3 hours**, worked over after **3 hours**

## 3 Floor leveling compound

### PCI Zemttec Outdoor cementitious coating for residential buildings and commercial construction

NEW!

- For direct use in outdoor areas exposed to weather conditions as well as in temporarily damp or dry indoor areas
- Resistant to weathering, frost/de-icing salt as well as permanent wetness
- No top coating necessary for outdoor areas
- Suitable for driving on with vehicles with pneumatic tires and solid rubber tires
- For layer thicknesses of 3-20 mm
- Can be applied on slopes up to 2 %
- Can be walked on after **4 hours**, can be worked over after **2 days**, able to bear weight after **7 days**

### PCI Farbchips 05 plastic color flakes for sprinkling into floor coatings

- Color: graniti

## 4 Impregnation

### PCI Zemttec Protect water-based silicate impregnation for mineral-based floors

NEW!

- 2-component, colorless, wear-resistant and anti-slip impregnation
- For indoors and outdoors
- For mineral floors on balconies, in garages, manufacturing rooms and storage spaces as well as offices, living areas, basements and cellars
- Vapor permeable
- Can be walked on after **20 minutes**, able to bear weight after **3 days**

#### Note:

In ideal cases, spreading, de-aerating and, if necessary, sprinkling the color chips should be executed in stages. To do this, work from the back to the front in approx. 1.5 m wide strips in the garage. De-aerate each strip immediately after spreading (and sprinkle in color chips). Then apply the next strip. It is not advisable to walk on the installed area with spiked shoes.

## Renewing or repairing the driveway rail

### Installing driveway rail

The new rail is fixed in place (doweled) for a perfect fit.

### Backfilling driveway rail

The rail is backfilled without cavities with flowable PCI Repafast Fluid repair mortar.

### Filling out the driveway rail

Deeper holes are filled with PCI Nanocret R4 PCC. The transition area is to be leveled out.

### Adjusting the driveway area

An inclined ramp created on the outside with PCI Nanocret R4 PCC assists to bridge height differences of up to 50 mm and thereby protects the rail from impact loads.



Backfilling the driveway rail with flowable mortar



Alternatively filling with mortar



Adjusting the height offset at the entrance rail with a ramp

## Preparing the substrate

### Grinding the floor

Optimum substrate preparation can be achieved by grinding the floor with a disc sander, i.e. old residues and impurities which could otherwise impair adhesion are removed and the absorbing capacity of the primer significantly improves. If there is evidence of heavy oil contamination, then either milling or reworking with PCI Entöler oil remover is required beforehand.

### Corners and connection areas

Hard-to-reach areas such as corners and angled details must be prepared with a concrete grinder.

### Suction cleaning

The floor surface area must be subsequently vacuumed with an industrial vacuum cleaner.

### Priming

Priming twice with PCI Gisogrund 404 (in criss-cross method) ensures reliable adhesion of the floor leveling compound onto the substrate. The primer will be diluted with water depending on the substrate.



Grinding the floor



Reworking corners and connections



Suction cleaning



Priming



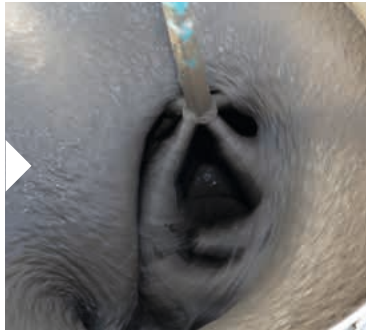
## Applying the coating

### Lump-free mixing

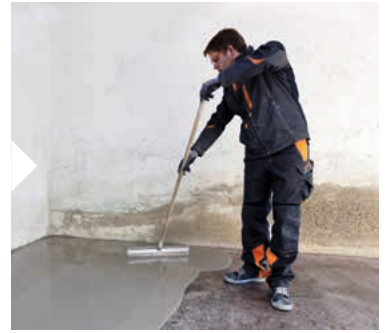
Mix the coating for at least 2 minutes until it is free of lumps using a suitable agitating tool/mixing tool (basket stirrer). Leave to stand for approx. 1 minute and stir again briefly.

### Spreading the coating

The compound should be spread out evenly over the primed surface. A surface scraper is particularly suitable for this workstep.



Lump-free mixing



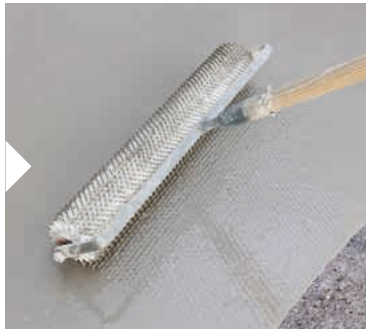
Spreading the coating

### De-aerating

A spiked roller should be used to de-aerate the mineral coating so that air void inclusions are removed and a homogeneous surface is created.

### Visual effect

PCI color chips can be sprinkled into the fresh surface which has not yet started to dry to achieve a visual effect. This is done immediately after PCI Zemtec Outdoor is applied and de-aerated.



De-aerating

## Surface protection and moisture protection

### Impregnation

The transparent, solvent-free and very low-emission PCI Zemtec Protect impregnation is applied by roller directly onto the cured substrate without applying a primer. The floor is completely prepared, protected and slip-resistant (R10) after two applications.

### Installing a cove fillet

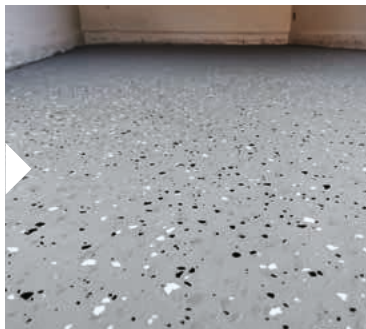
PCI Nanocret R4 PCC is used to produce a cove fillet in the wall connection area.



Impregnation

### Refurbishing damp walls

If there is evidence of advanced moisture penetration in the masonry and corresponding damage in the form of damp spots, efflorescence and spalling on the plaster surface or paintwork finish, we recommend to repair the walls with our refurbishing plaster system and, if necessary, to apply a waterproofing layer.



Finished surface



PCI Zemtec Outdoor is the ideal mineral floor coating for a perfect and immediately usable result.

- Highly resistant to weathering, frost/de-icing salt and permanent wetness
- Simple and quick to install, no top coating necessary
- Can be used on slopes of up to 2%, the slope is maintained



- Additional protection of the surface with PCI Zemtec Protect impregnation
- Enables easier care and cleaning



Für Bau-Profis

**PCI Augsburg GmbH**

Piccardstr. 11 · D - 86159 Augsburg

P.O.B. 10 22 47 · D - 86012 Augsburg

Germany

Phone + 49 (8 21) 59 01-0

Fax + 49 (8 21) 59 01-372

[www.pci-augsburg.de](http://www.pci-augsburg.de)

Follow us on:



Certified quality  
management system

